



XRY

 **Secez**
services
www.secez.com

Getting the best digital evidence is what matters

XRY extracts more data faster, with full integrity

Successful investigations rely on fast, high quality extraction of data from mobile phones. Without sound, reliable digital evidence, your and your team's efforts may be in vain.

The newest version of XRY is more powerful, intuitive and efficient than ever. It lets forensic specialists as well as field and frontline users extract more high-quality data in less time than ever before, while at all times fully maintaining the integrity of the evidence.

Welcome to XRY, the fastest and best way to get your hands on the best digital evidence.

+ FAST EXTRACTION AND DECODING

+ GET MORE DATA

+ FULL EVIDENCE INTEGRITY

MSAB

When you want to stay ahead

Everywhere in the world, people carry and use all sorts of mobile digital devices all the time. As a result, digital evidence is absolutely critical to solving most crimes today. The extraction of that digital forensic evidence is essential. If it isn't done quickly and correctly, investigations can be blocked, can arrive at wrong conclusions, can be thrown out and perpetrators can go free.

The XRY family of tools is the flagship of the MSAB portfolio. XRY products are constantly being upgraded to help you recover data from more mobile devices and more apps, and to help you work better, faster and smarter.



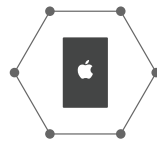
MORE DEVICES SUPPORTED THAN EVER

Allows you even better flexibility with more than 21,500 device profiles supported



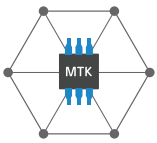
ADDED PASSCODE & BYPASS FEATURES

Lets you access even more devices with over 2,600 new passcode & bypass features



BETTER APPLE SUPPORT

Makes it easier to access Apple devices with improved support for the latest iOS.



BETTER MTK SUPPORT

Offers improved support for over 150 MTK-based devices to make them more accessible



MORE APPS

Allows you to retrieve more data with over 1,600 app versions supported, including Facebook, WhatsApp, Viber and Instagram Cloud.



ENHANCED WEBKIT SUPPORT

Lets you access more browsing history, from Apple's Safari, Google Chrome, Opera and others.



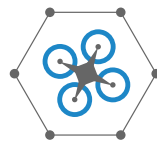
BETTER LOCATION DATA REPORTING

Lets you correlate different data sets more easily through image and movie location data.



PRE-INDEXATION

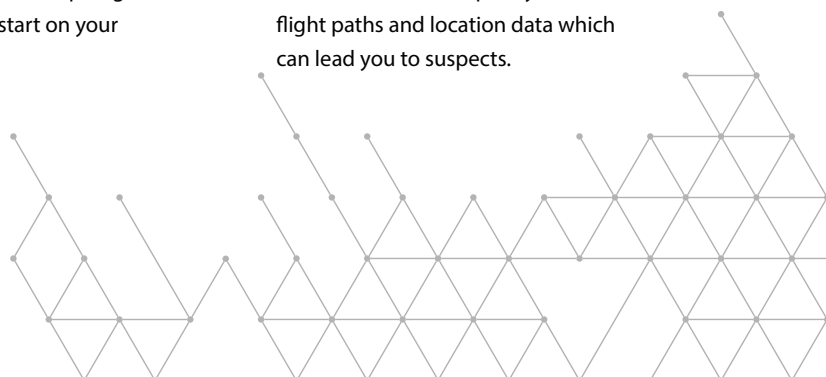
Saves you time by pre-indexing extracted files for XAMN Spotlight, giving you a head start on your analysis.



ADDED DRONE SUPPORT

Lets you extract and decode location data from drones to quickly see flight paths and location data which can lead you to suspects.

Tell: +91 - 120-2423448
enquiry@secez.com



- ✓ Over 21,500 device profiles supported
- ✓ Over 2,600 passcode & bypass features
- ✓ Over 1,600 app versions
- ✓ Multiple extractions
- ✓ Secure reporting throughout the chain of custody
- ✓ Frequent updates and new cables
- ✓ Help files
- ✓ Audit trail of forensic process
- ✓ Best support for smartphone apps
- ✓ MSAB Launcher available

WHY XRY? Are you...

A FORENSIC SPECIALIST

Increase your speed and reach without giving up quality and integrity. XRY also offers a wide support of devices and seamless access to analysis and reporting through the integration with other MSAB products.

A FIELD OR FRONTLINE USER

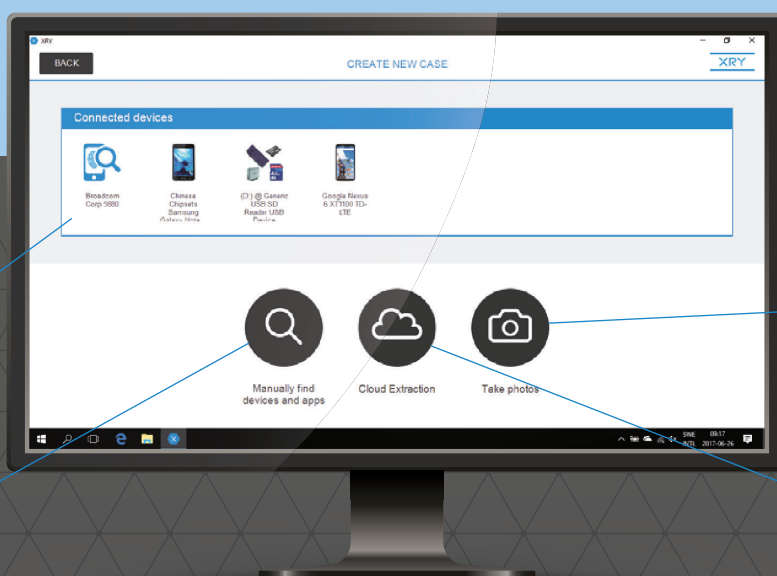
Make your job easier and faster by having the ability to start investigations and even confront suspects right away at the crime scene without having to send devices to the lab.

A MANAGER

Help your team do their job with a cost efficient, trustworthy solution that's been proven in court and maintains the integrity of the chain of evidence. XRY also provides the best training in the industry and offers a solution that is easily managed through XEC Director.

Multiple devices
Simultaneous extractions from 3 devices possible, including from non-standard devices.

Search
All types of data, from a wide array of devices and apps, can be extracted and recovered.



XRY Camera
Supporting picture and video evidence can be gathered.

XRY Cloud
Data from connected cloud based storages can be extracted and recovered.

XRY is also available on tablet and in our Kiosk-solution. With the tablet you can extract in the field for instant actionable insights. The Kiosk gives you an easy to use, turnkey solution with pre-configured workflows. This removes need for sending devices to the lab, allowing you to start the investigation right away.

➡ Contact enquiry@secez.com to get started today, or download a demo.



The starting place for mobile forensics

XRY Logical is the quickest extraction method because it enables you to access and recover live and file system data from the device right at the crime scene. It extracts data from digital devices by communicating with the operating system of the device.

The interface is intuitive and user friendly, making it easy to recover data in a forensically secure manner; information that is instantly reviewable as well as credible in a court of law. Several different examinations, such as the logical extraction of the device along with reads from the SIM card and SD memory storage for example, can be stored together throughout the chain of custody, making XRY a very efficient and user friendly tool. The tamper-proof XRY report can be customized to suit your needs, references and organization. Also, the unique Device Manual help file lets you know exactly what information you can expect to recover from a device, as well as what not to expect.

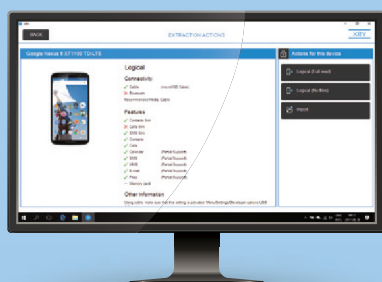
XRY Logical is our entry-level solution for forensic investigators and the starting point for our license options. It works on Windows-based computers and comes with the necessary hardware.

PRODUCT HIGHLIGHTS

- SIM Card Reading
- Mobile Device Logical Examinations
- Triage Profiles
- Fast Recovery of Mobile Data
- Smartphone App Support

FEATURES

- Windows Based Software Solution
- Unique Help File for Every Device
- Easy Data Extraction and Reporting
- Secure File Format
- Multiple Hash Algorithm Options



XRY Logical communicates directly with the operating system.

SPECIFICATIONS

PC requirements: Intel 6th Generation (Core i3 or above), 8GB RAM, 2 USB-ports
Operating system requirements:
Windows 7 - Windows 10 recommended (64Bit only)
Display requirements:
1600 x 900 resolution minimum
Additional Requirements:
Microsoft .NET Framework 4.5
Packaged weight: 4.5 kg (9.9 lbs) approx
Case dimensions: 45 cm x 25 cm x 17 cm (18" x 10" x 7") approx

TOOLS

- CD/DVD/Blue-ray Burning Wizard
- Clone SIM Cards
- Clean Registry
- License Updates
- Download Updates



Get greater access to system and deleted data

XRY Physical lets examiners bypass the operating system to dump all the raw data out of the device. This memory dump is a complex data structure that gives you access to system, protected and deleted data, plus allowing you to overcome certain security and encryption challenges on locked devices.

XRY Physical gives forensic specialists the ability to push investigations even further by physically acquiring internal memory data that suspects would want to suppress or hide. Users can also generate hash values of the memory image as well as individually decoded files. Using XAMN Spotlight, you can see the hex code quickly and by activating source mode, you can verify the original raw data. MSAB's expert team of developers has a comprehensive understanding of each individual phone's unique memory structure.

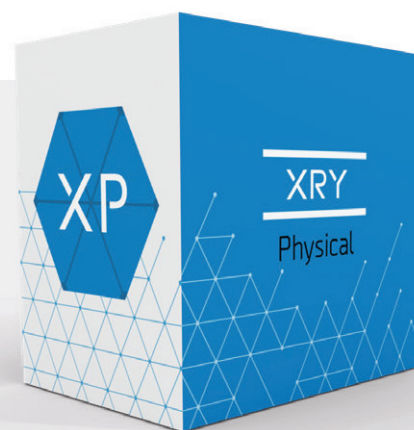
XRY Physical is the next level license for the physical recovery of data from mobile devices.

PRODUCT HIGHLIGHTS

- Mobile Device Physical Examinations
- Bypass or Recovery of Passcodes
- Reconstructed and Deleted Data
- Device Dump and Binary Importing
- Smartphone App Support

FEATURES

- Windows Based Software Solution
- Unique Help File for Every Device
- Easy Data Extraction
- Multiple Hash Algorithm Options



XRY LICENSE INCLUDES Free cables | Free software updates | Free technical support



XRY Physical physically recovers the content of the device.

SPECIFICATIONS

PC requirements: Intel 1.6 GHz dual-core, 2GB RAM, 2 USB-ports

Operating system requirements:

Windows 7, 8 or 10 (64Bit only)

Display requirements:

1600 x 900 resolution minimum

Additional requirements:

Microsoft .NET Framework 4.5

Packaged weight: 4.5 kg (9.9. lbs) approx

Case dimensions: 45 cm x 25 cm x 17 cm

(18" x 10" x 7") approx

TOOLS

- CD/DVD/Blue-ray Burning Wizard
- Clean Registry
- License Updates
- Download Updates



XRY PINPOINT

The solution for non-standard mobile devices

XRY PinPoint lets you extract and decode data from non-standard mobile devices, such as cheap imitation phones from Asia. The connector pin-outs are the main forensic challenge here, as they vary and may not even be known. As PinPoint can automatically detect the pin-out configuration required to communicate with the mobile device, this solution is comprised of both compact hardware and powerful software.

XRY PinPoint is fully integrated and uses the familiar and easy-to-use XRY Logical/Physical interface, but requires a separate license. This means that it uses the software's powerful decoding functionality. The specific PinPoint software is regularly updated, which means it improves over time, to avoid frozen firmware that goes out of date quickly.

PINPOINT SUPPORTS DEVICES WITH CHIPSETS FROM:

- MediaTek Coolsand
- Spreadtrum
- Coolsand
- Infineon

PRODUCT HIGHLIGHTS

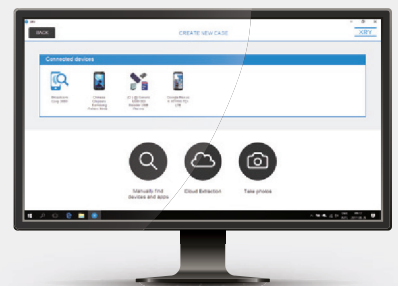
- Automatic Pin Detection
- Logical and Physical Extraction
- Report Generation
- Binary File Export
- Generic Profiles for Maximum Support

DATA DECODING

- Call Logs
- Contacts
- SMS/MMS
- Media Files
- Calendar
- Tasks
- Notes
- Deleted Data
- Chip ID
- File System

INCLUDED IN THE PINPOINT PACKAGE

- Interface Cable
- Binder
- Adapter Kit (33 Tips)
- Power Cable Alligator
- Power Cable Clips
- Power Cable PCB
- Voltage Reduction Adaptor
- Pouch



When faced with non-standard mobile devices, XRY PinPoint offers you the ability to perform the same extractions and recoveries as you would on standard mobile devices.



XRY CAMERA

Gather supporting picture and video evidence

XRY Camera gives forensic examiners the opportunity to complement XRY reports with actual device pictures and video taken with an HD camera. Sometimes a screenshot is the only way to capture relevant evidence and help validate device extraction results. Securing unique smudge markings on a smartphone screen, unusual identifying features or the IMEI on the device sticker underneath the phone battery can be critical in a case. XRY Camera lets you capture those critical supporting images that can prove pivotal to the investigation, include them in the relevant XRY case and add examiner notes in real-time to support your case, at any stage of the process. And it is all done in an evidentially sound manner.

XRY Camera is a separate, hardware-based solution that requires a separate license.

PRODUCT HIGHLIGHTS

- Take Pictures and video via XRY
- Review before Capture
- Insert into Categories
- Pictures Built into Secure XRY Reports
- Validate Data with Screenshots



XRY Camera adds another tool and another layer of credibility to your case.



XRY CLOUD

Recovery of data beyond the mobile device

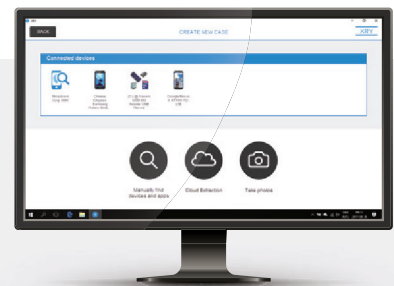
XRY Cloud recovers data beyond the mobile device itself from connected cloud-based storage. This is particularly useful when looking for online social media data and app-based information. Smartphone apps use credential tokens held on the device to verify identity automatically without having to constantly enter their details. These tokens offer forensic examiners the opportunity to recover data from cloud-based storage centers for services such as Facebook, Google, iCloud, Twitter, Snapchat, WhatsApp, Instagram Cloud and more.

You can recover data in two modes: automatic and manual. In automatic mode, you acquire the app tokens needed for recovery of cloud data, via the standard XRY smartphone extraction when you have the actual device in your physical possession. This will also help you locate other data online. In manual mode, you can recover data without the device itself, by entering user id and password login details for app services that may have been recovered from alternate sources.

XRY Cloud is a separate component within the XRY software and requires a separate license.

PRODUCT HIGHLIGHTS

- Automatic & Manual Modes
- Data combined into a standard XRY report
- Retrieve data from Facebook, Google, iCloud and more



Recover data from online social media as well as app-based information, from cloud-based storage.



XRY EXPRESS

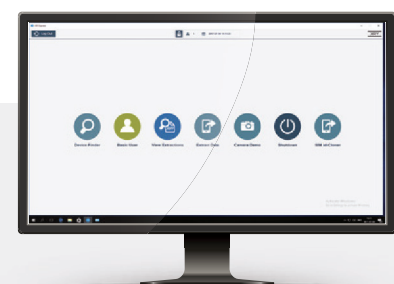
Uncover evidence quickly with a simplified, locked-down workflow

XRY Express offers the full power of XRY through a simplified interface that guides users step-by-step through their mobile device extractions. With its ease of use, XRY Express enables field-based investigators and other non-expert users to quickly perform their own mobile device extractions and analyses. The locked-down workflow means that every user follows approved, consistent processes.

XRY Express is the same software that runs on the MSAB Kiosk and MSAB Tablet platforms, now installable on Windows-based PCs.

PRODUCT HIGHLIGHTS

- User-friendly extraction wizards
- Custom sequences for different user groups
- Assists compliance with standards and regulations
- Remote management and updates with XEC Director
- Installation on Windows-based PCs together with other software



The XRY Express interface can be customized and helps users extract mobile devices step by step.

The Ecosystem of mobile forensics

Combined together, all our products, platforms and services form a complete Ecosystem of mobile forensics. No matter the type of users, locations, digital mobile devices or environments you work in; we provide tools designed to meet your particular needs. A solution from MSAB ensures best practice workflows for all stakeholders in your organization: front-line personnel, investigators, analysts and managers.

XRY

The XRY Family

The industry standard to extract digital forensic evidence and intel from mobile devices.

XAMN

The XAMN Family

A suite with powerful, efficient and flexible tools to analyze and report mobile device data.

XEC

The XEC Family

Tools for effective management of your forensic processes and systems



XRY Logical

Extract and recover data by communicating with the operating system.



XRY Physical

Extract and recover raw data directly from the device memory.



XRY Express

Extract and recover data through a simplified, locked-down workflow.



XRY Cloud

Extract and recover data by communicating with the operating system.



XRY Drone

Access and analyze drone forensic data.



XAMN Viewer

A free and easy-to-use tool for quick and basic analysis and reporting.



XAMN Spotlight

The primary tool for analysis and reporting with powerful filtering, search and viewing options.



XAMN Horizon

Builds on Spotlight with four powerful new ways to view and analyze data.



XAMN Elements

A hex-carving tool that enables experts to reconstruct undecoded or fragmented data.



XEC Director

Remote management of systems and users.



XEC Export

Batch export and conversion of XRY files into other formats.



MSAB SERVICES

Services that enable your organization to deliver consistent best practice digital forensic results, develop your personnel and allow you to utilize your assets to the best effect.

- Strategy
- Implementation
- Training
- Support



MSAB PLATFORMS

We supply MSAB software on different hardware platforms to suit different user levels and environments: Open platforms for traditional Windows computers with point-and-click interfaces, and turnkey platforms for easier-to-use systems with touch screen interfaces.



THE XRY FILE FORMAT

The XRY file format keeps evidence secure and accounted for at all times, with a full forensic audit trail and protection of the evidence from initial extraction through analysis to the final report or presentation.

Tell: +91 - 120-2423448
Email: enquiry@secez.com
Website: www.secez.com



MSAB

When you want to stay ahead

 **Secez**
— services —
www.secez.com