

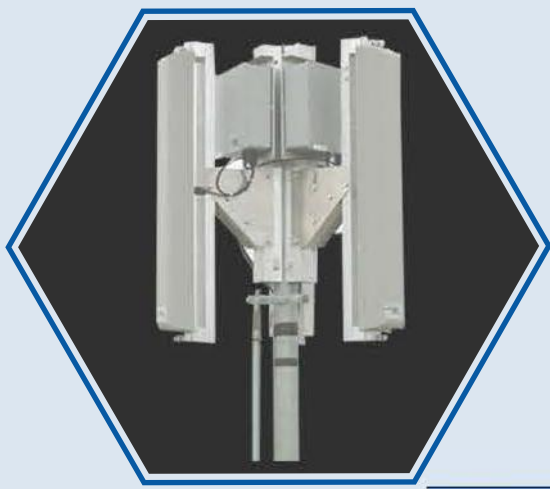
TELECOM SOLUTIONS

- Cellular Backhaul (Wireless Bridges)
- GSM-4G-LTE, 5G Solutions (BSS)



LTE Base Station Antennas 1710-2690MHz / 790-960MHz :-

Using the latest Software Defined Radio and RF technology, our cellular Base Station products operate in all the common cellular bands from 380MHz, 400MHz, distances over 20km and high net throughput to subscriber devices.



Mechanical Specifications	
Connector	2 x 7/16DIN-Female
Connector Position	Bottom
Height X Width X Depth (mm)	1360X160X80
Packing Size (mm)	1850X210X155
Antenna Weight (Kg)	6.6
Installation Kit Weight (Kg)	3.7
Packing Weight (Kg)	11.8
Windload (N,at 150Km/h) Frontal/Lateral/Rearside	268/142/285
Max. wind velocity (Km/h)	216
Random material	Fiberglass
Mechanical tilt(°)	Gray
Operating temperature (°C)	0~15
Mounting hardware (mm)	-50~65

Electrical Specifications				
Frequency range (MHz)	1710~2690			
	1710~1880	1920~2200	2200~2500	2500~2690
Polarization	±45°			
Gain (dBi)	17.2	17.5	17.8	18
Horizontal 3db (beamwidth(°))	69	66	65	63
Vertical 3db (beamwidth(°))	7.5	6.5	6	5.8
	≥25			
	=15 typically. ±60°=10			
	0~10			
Sideboard Suppression (dBi) (First side lobe above main beam)	0°...5°...10° 16....15....14	0°...5°...10° 16....15....15	0°...5°...10° 15....15....15	0°...5°...10° 15....15....14
VSWR	<1.5			
Isolation: Intra-system (dBi)	≥28			
Intermodulation IM3 (2X43dBm carrier)	-150dbc			
Impedance	50			
Max. Power per input (W) @50°C	200			
Lightning Protection	DC Ground			