

# Nx64-MUX 16 PORT TIME DIVISION MULTIPLEXER



SYNC / ASYNC

## FEATURES / BENEFITS

- ✓ Composite Port Interface - Software selectable for RS-232, RS-530, V.35, RS-422/449 or X.21
- ✓ Sub-Channel Interface(s) - 16 ports RS-232, four ports are software selectable for RS-232, RS-530, V.35, RS-422/449 or X.21
- ✓ Sub-Channels support Sync to 768k and Async data up to 38.4kbps
- ✓ Composite Port speeds - 64k up to 2.048Mbps in 64k increments
- ✓ Independent sub-channel configuration with support for remote downlink loading
- ✓ Non-disruptive channel configuration
- ✓ Automatic cut-over of channels from failed to active composite port
- ✓ All configuration via terminal port
- ✓ In-Band Management Channel allows remote upgrades, configuration and status
- ✓ Modular design with front load cards
- ✓ Sturdy Metal Rackmount Enclosure
- ✓ 85-264 VAC Universal AC Input
- ✓ Optional Redundant Power Supplies

## DESCRIPTION

The 16-Port Nx64-MUX is a modular TDM Multiplexer designed to support up to sixteen sub-channel ports from 9.6Kbps to 768Kbps in both Sync and Async formats. The unit is supplied with a variable composite port rate from 64Kbps to 2.048Mbps in 64k increments for maximum flexibility. The composite port data interface is software selectable for RS-232, RS-530, V.35, RS-422/449 or X.21.

The sub-channel ports may be individually configured to support flow control of RTS to DCD on a port by port basis or no flow control. The ports also support individual RTS to CTS delays and external TXC timing for DCE to DCE crossover. The data interfaces are RS-232 on 16 ports. Four of the user ports are software selectable for RS-232, RS-530, V.35, RS-422/449 or X.21.

The Nx64-MUX derives its timing from the external DCE attached to the composite port. Alternately, timing may be sourced by the Nx64-MUX in a direct cabled pair of multiplexers.

The Nx64-MUX utilizes four, 4-port interface cards, a main processor card and a power supply card. This modular design facilitates future upgrades and allows the user to add user ports in 4-port increments. All cards are front load.

The management port allows local and remote configuration commands. Integral software design features allow configuration of a sub-channel without disrupting existing sub-channels. Network management features include channel and composite loop backs, and link down error reporting. All port parameters are set with an async terminal connected to the configuration port. Setup procedures are menu driven and all parameters are stored in memory that supports power outages and supports end to end software upgrades via management channel.

The Nx64-MUX has an internal power supply and supports voltages of 85-264 VAC. The unit supports redundant power supplies with system notification via optional chassis. The unit is 3-U high, or 5-U high and is standalone or 19" rackmount. The factory warranty is 3 years.

**EAST COAST DATACOM, INC.**

# SPECIFICATIONS

## Application

Multiple Sync or Async DTE devices time division multiplexed onto one Sync DCE communication link

## Timing

System Timing: External via Composite Port or Internal Timing for back-to-back connections Each sub-channel Port capable of accepting external TXC timing for DCE to DCE crossover

## Capacity

Composite Port: One Input  
Sub-Channel Ports: Up to sixteen

## Data Format

Data transparent at all data rates

## Data Rates

Composite Port: 64Kbps to 2.048Mbps in 64k increments

Sub-Channel Ports: SYNC: Full Rates 19.2k, 38.4k, 56k, 64k, 128k, 256k, 384k, 512k, 768k 3/4 Rates 7.2k, 14.4k, 28.8k  
ASYNC: Full Rates 9.6k, 19.2k, 38.4k 3/4 Rates 7.2k, 14.4k, 28.8k Async Support: configurable for 8, 9, 10 and 11 bit data on a per channel basis

## Composite Port Interface

One Port: DB-25 Male, Software selectable for RS-232, RS-530,\* V.35, \*RS-422/449 and \*X.21

\* (Adapter cable required)

## 4 Port Sub-Channel I/O Card(s)

Four Ports: DB-25 Females, Four ports RS-232, one port Software Selectable for RS-232, RS-530, V.35, RS-422/449 and X.21 Maximum 4 cards per chassis, 16 I/O's per chassis

## Control Leads Passed

Options for none or RTS to DCD in Band

## Maximum Channel Composite Rate

2.048Mbps with composite overhead of 1600bps.  
Overhead is constant for all composite port rates.

## Cascade Port

Via any sub-channel port

## Indicators

Power, TXD Data, RCV Data, RX Clock, Sync, Loopback

## Power Source

85-264 VAC @ 10%, 47-440 Hz, IEC Power Inlet, (2) 5mm Fuses

## Environmental

Operating Temperature....32° to 122° F (0° to 50° C)

Relative Humidity.....5 to 95% Non-Condensing

Altitude.....0 to 10,000 feet

## Dimensions

Height ..... 5.25 inches (13.32 cm)

Width ..... 17.00 inches (43.18 cm)

Length ..... 9.00 inches (22.86 cm)

## Weight

9 pounds (4.2 Kg)

## Warranty

Three Years, Return To Factory

## ORDERING INFORMATION

Part Number: 166060

Model: Nx-MUX

Description: Nx-MUX, Base Unit w/ Dual Power Slots

Part Number: 166045

Model: Processor PCB, Nx64-MUX

Qty Req: 1

Part Number: 166007

Model: I/O Board, 4-Port, Nx8-MUX

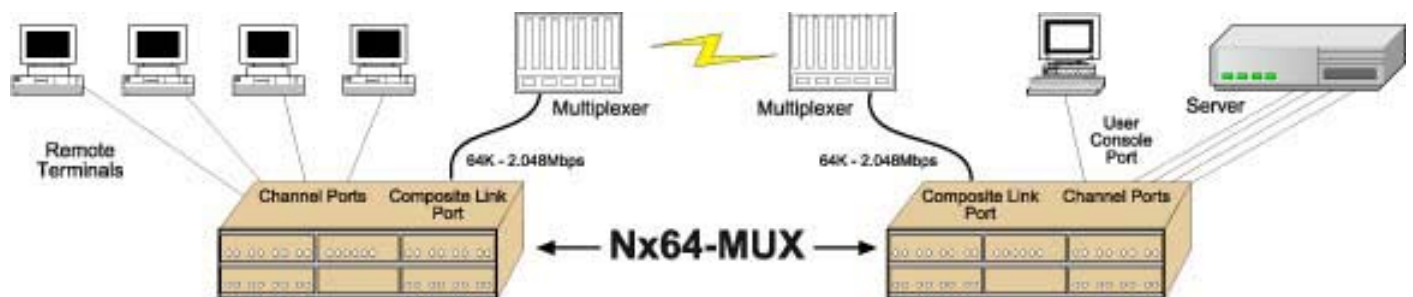
QTY Req.: 1 to 4 Max

Part Number: 166080

Model: Nx-SRPS

Description: Nx-MUX, Single Redundant Power Supply

EAST COAST DATACOM DESIGNS AND MANUFACTURES DATA COMMUNICATION EQUIPMENT FOR YOUR NETWORK REQUIREMENTS.



SPECIFICATIONS ARE SUBJECT TO CHANGE WITHOUT NOTICE

## EAST COAST DATACOM, INC.

245 Gus Hipp Boulevard, STE 3 • Rockledge, FL 32955-4812 U.S.A.

TEL: (321) 637-9922

WEB SITE: [www.ecdata.com](http://www.ecdata.com)

FAX: (321) 637-9980