



# FBR-8FE1LX-SFP

8-Port 10/100 Mbps and 1-Port 1000 Mbps Ethernet 9-Port Switch / Media Converter, SFP Optical Port

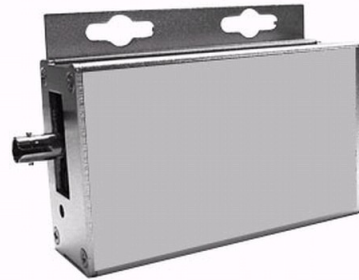
## STANDARD FEATURES

- 10/100/1000 Mbps Ethernet
  - 10/100/1000 BASE-T/TX electrical port
  - 1000 BASE-LX optical port
- Electrical port supports Auto-Negotiation for 10, 100 or 1000 Mbps, full duplex or half duplex data
  - Optical port supports 1000 Mbps full duplex data
    - Automatic MDI/MDI-X crossover
- Utilizes standard SFP optical modules for a choice of fiber type, number of fibers, and transmission distance
  - Transparent to data encoding
    - Hot-Swappable
  - No in-field optical adjustments required
    - IEEE 802.3 compliant
    - Lifetime Warranty

## SPECIFICATIONS

| DATA                                    |  |
|---|--|
| Data Interface                          | Ethernet   |
| Data Rate                               | 10/100 Mbps electrical / 1000 Mbps optical<br>IEEE 802.3 Compliant<br>Full Duplex or Half Duplex Electrical Port<br>Full Duplex Optical Port |
| Ethernet Connector                      | RJ-45  |
| FIBER                                   |  |
| Number of Fibers Required               | Depends on choice of SFP module  |
| Type of Fiber                           | Depends on choice of SFP module  |
| Type of Optical Connector               | Depends on choice of SFP module  |
| Wavelengths Used (Fwd./Rvrs.)           | Depends on choice of SFP module  |
| Optical Power Budget                    | Depends on choice of SFP module  |
| Maximum Distance (miles (km))           | Depends on choice of SFP module  |
| ELECTRICAL                              |  |
| Power:                                  | Surface Mount: 12 VDC @ 1200 mA<br>Rack Mount: 12 VDC @ 1200 mA (powered by card cage power supply)  |
| Current Protection                      | Automatic Resettable Solid-State Current Limiters  |
| Power Connector                         | Terminal Block with Screw Clamps   |
| Hot-Swappable in Rack                   | Yes  |
| INDICATORS                              |  |
| Indicators                              | Optical Link/Data Activity<br>Electrical Link/Data Activity<br>Electrical Speed<br>Power   |
| MECHANICAL                              |  |
| Overall Size                            | 6.5" x 6" x 1" (165 x 152 x 254 mm)  |
| Number of Rack Slots                    | 1  |
| Unit Weight                             | <2 lb/0.9 kg   |
| Shipping Weight                         | <2 lb/0.9 kg   |
| ENVIRONMENTAL                           |  |
| Operating Temperature                   | -4 0°C to +75°C  |
| Storage Temperature                     | -4 0°C to +85°C  |
| Relative Humidity                       | 0% to 95% non-condensing   |
| MTBF (hours)                            | > 100,000 hours  |
| COMPLIANCE                              |  |
| Safety Standards Unit Complies With     | UL/EN60950-1   |
| EMC Standards Unit Complies With        | FCC part 15, EN55022, EN55024  |
| Laser Standards Unit Complies With      | FDA Performance Standard for Laser Products, Title 21, Code of Federal Regulations, Subchapter J   |
| <b>Warranty (Effective Jan 1, 2009)</b> |  |
| Limited Lifetime                        |  |

© Aventura Technologies



- Nine ports of 10/100base-T/TX Ethernet
- One port of SFP based 1000base-LX Ethernet
- One or Two Fibers, Based on SFP Module
- Multimode or Single-mode Fiber, Based on SFP Module
- Wide Operating Temperature Range

## AVAILABLE MODELS

| Part number    | Description  |
|----------------|--|
| FBR-8FE1LX-SFP | 8-Port 10/100 Mbps and 1-Port 1000 Mbps Ethernet 9-Port Switch / Media Converter, SFP Optical Port |