



FBR-1GE2LX-SFP

10/100/1000 Mbps Ethernet 3-Port Switch / Media Converter, SFP Optical Ports

STANDARD FEATURES

- 10/100/1000 Mbps Ethernet
 - 10/100/1000 BASE-T/TX electrical port
 - 1000 BASE-LX optical port
- Electrical port supports Auto-Negotiation for 10, 100 or 1000 Mbps, full duplex or half duplex data
 - Optical port supports 1000 Mbps full duplex data
 - Automatic MDI/MDI-X crossover
- Utilizes standard SFP optical modules for a choice of fiber type, number of fibers, and transmission distance
 - Transparent to data encoding
 - Hot-Swappable
 - No in-field optical adjustments required
 - IEEE 802.3 compliant
 - Lifetime Warranty

SPECIFICATIONS

DATA

Data Interface	Ethernet
Data Rate	10/100/1000 Mbps IEEE 802.3 Compliant Full Duplex or Half Duplex Electrical Port Full Duplex Optical Port
Ethernet Connector	RJ-45

FIBER

Number of Fibers Required	Depends on choice of SFP module
Type of Fiber	Depends on choice of SFP module
Type of Optical Connector	Depends on choice of SFP module
Wavelengths Used (Fwd./Rvrs.)	Depends on choice of SFP module
Optical Power Budget	Depends on choice of SFP module
Maximum Distance (miles (km))	Depends on choice of SFP module

ELECTRICAL

Power:	Surface Mount: 12 VDC @ 400 mA Rack Mount: 12 VDC @ 400 mA (powered by card cage power supply)
Current Protection	Automatic Resettable Solid-State Current Limiters
Power Connector	Terminal Block with Screw Clamps
Hot-Swappable in Rack	Yes

INDICATORS

Indicators	Optical Link/Data Activity Electrical Link/Data Activity Electrical Speed Power
------------	--

MECHANICAL

Overall Size	6.5" x 6" x 1" (165 x 152 x 25.4 mm)
Number of Rack Slots	1
Unit Weight	<2 lb/0.9 kg
Shipping Weight	<2 lb/0.9 kg

ENVIRONMENTAL

Operating Temperature	-4 0°C to +75°C
Storage Temperature	-4 0°C to +85°C
Relative Humidity	0% to 95% non-condensing
MTBF (hours)	> 100,000 hours

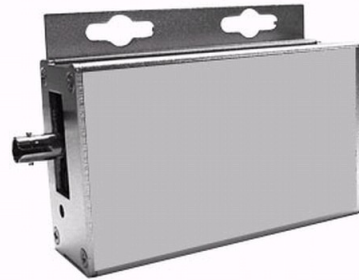
COMPLIANCE

Safety Standards Unit Complies With	UL/EN60950-1
EMC Standards Unit Complies With	FCC part 15, EN55022, EN55024
Laser Standards Unit Complies With	FDA Performance Standard for Laser Products, Title 21, Code of Federal Regulations, Subchapter J

Warranty (Effective Jan 1, 2009)

Limited Lifetime

© Aventura Technologies



- One port of 10/100/1000base-T/TX Ethernet
- Two ports of SFP based 1000base-LX Ethernet
- One or Two Fibers Per Optical Link, Based on SFP Module
- Multimode or Single Mode Fiber, Based on SFP Module
- Wide Operating Temperature Range

AVAILABLE MODELS

Part number	Description
FBR-1GE2LX-SFP	10/100/1000 Mbps Ethernet 3-Port Switch / Media Converter, SFP Optical Ports