

PART NUMBER

KAD178341

REV.

DATE

DESC.

INITIAL

Electrical Data

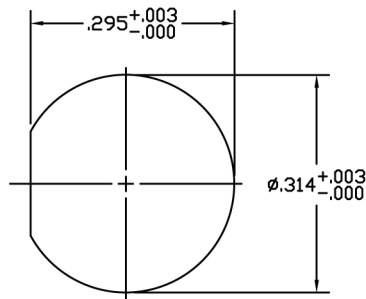
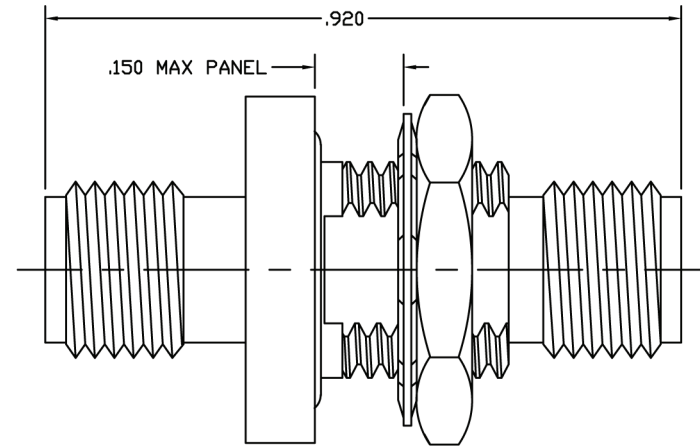
Frequency Range

DC - 34.5 GHz

VSWR

1.25 to 34.5 GHz

Insertion Loss

 $.05 \sqrt{\text{Frequency}}$ **RoHS Compliant**RECOMMENDED
PANEL CUTOUT**Konnnect RF**540 NW University Blvd. Ste. 109
Port Saint Lucie, Florida, 34986
1-800-790-5887

PART NUMBER

KAD178341

DESCRIPTION

**Adapter - In-Series - 3.5mm Female Jack
to Female Jack Bulkhead**

CAGE CODE

664U0

SIGNATURE

X

THIS DRAWING INCLUDING THE
DESIGNS IS THE PROPERTY OF
KONNECT RF AND IS NOT TO
BE USED FOR ANY PURPOSE
WITHOUT OUR APPROVAL.**Materials****Body****Stainless Steel****Passivated****Center Contact****Be-Cu****Gold Plated****Insulator****Rexolite****Insert****Stainless Steel****Passivated**