

PART NUMBER

**KAD177938**

REV.

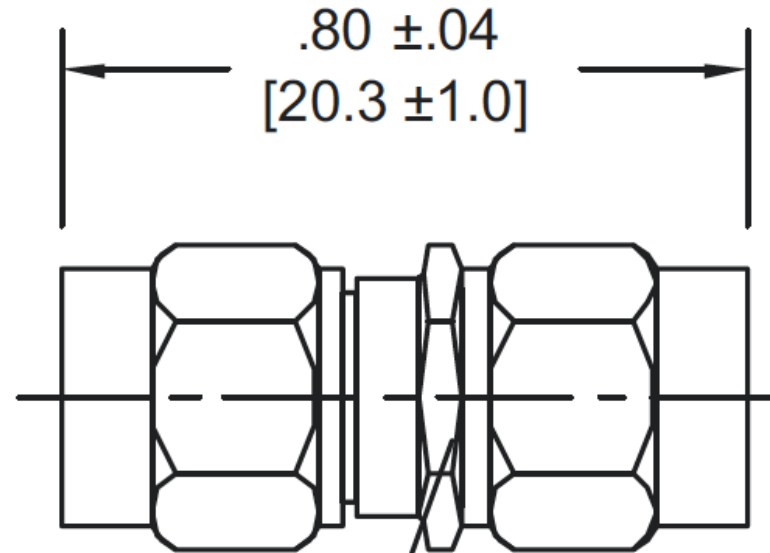
DATE

DESC.

INITIAL

**Electrical Data**Impedance  
Frequency Range50 Ohm  
DC - 40 GHz

VSWR

DC - 18 GHz = 1.10:1 Max.  
18 - 26.5 GHz = 1.15:1 Max.  
26.5 - 40 GHz = 1.25:1 Max.**RoHS Compliant**

5/16 [7.9] HEX

**Konnnect RF**540 NW University Blvd. Ste. 109  
Port Saint Lucie, Florida, 34986  
1-800-790-5887

PART NUMBER

**KAD177938**

DESCRIPTION

**Adapter - In-Series - 2.92 Straight Male  
Plug to Male Plug**

CAGE CODE

**664U0**

SIGNATURE

X

**Materials**Body  
Center Contact  
InsulatorStainless Steel  
Be-Cu  
TeflonPassivated  
Gold PlatedTHIS DRAWING INCLUDING THE  
DESIGNS IS THE PROPERTY OF  
KONNECT RF AND IS NOT TO  
BE USED FOR ANY PURPOSE  
WITHOUT OUR APPROVAL.