

PART NUMBER

KAD177414

REV.

DATE

DESC.

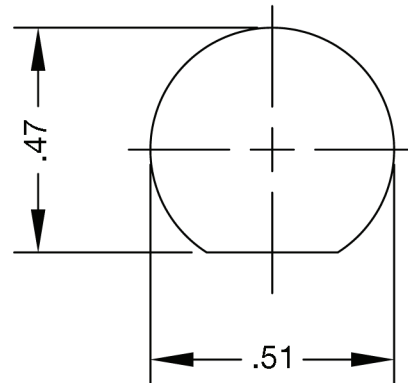
INITIAL

Electrical Data

Impedance 50 Ohm
 Frequency Range DC - 2GHz
 Voltage Rating 500 V rms @ Seal Level
 DWV 1500 V rms @ 60 Hz @ Sea Level

Performance

Temperature Range -65°C to +165°C
 Seal 30 PSI Max.
 Panel Thickness .28 Max.



Recommended
Mounting Hole
(Not To Scale)

External Toothed Lockwasher
.040 THK.

.750 HEX
X .09 THK

Gasket

Ø.687

.218 (+0.00 -0.05)
FLAT

.28 Max
Panel

0.88

0.153

540 NW University Blvd. Ste. 109
 Port Saint Lucie, Florida, 34986
 1-800-790-5887

PART NUMBER

KAD177414

DESCRIPTION

**Adapter - In-Series - BNC Female Jack to Female
 Jack - Bulkhead Mount - Hermetically Sealed**

CAGE CODE

664U0

SIGNATURE

X

Materials

Contact Pin	Be-Cu	Gold Plated
Lockwasher	Phos. Bronze	Nickel Plated
Gasket	Silicone Rubber	
Insulator	Teflon	
Body / Other	Brass	Nickel Plated
Hermetic Seal	C.R. Steel / Nickel Steel, and Glass	

THIS DRAWING INCLUDING THE
 DESIGNS IS THE PROPERTY OF
 KONNECT RF AND IS NOT TO
 BE USED FOR ANY PURPOSE
 WITHOUT OUR APPROVAL.